

CERTIFICATE OF LOCATION OF GOVERNMENT CORNER

County of Anoka

State of Minnesota

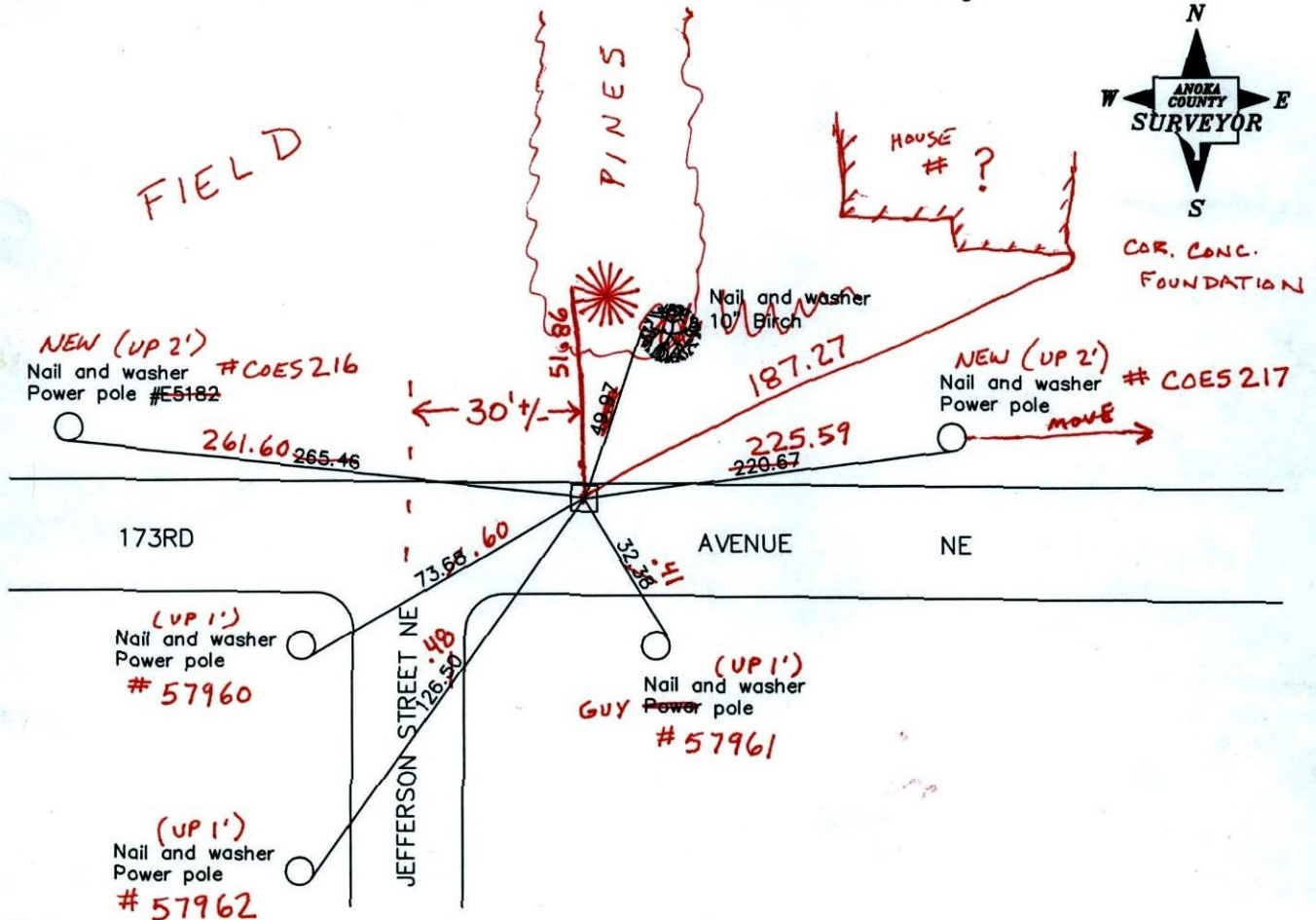
North 1/4 Corner of Sec. 7 Township 32 Range 23

I hereby certify that on the 24th day of October, 1962, I found the described corner which was evidenced by a granite monument

and I further certify that to perpetuate the location of said corner, I did, at the exact location thereof, place a permanent marker consisting of a granite monument

(DOWN 2'±, 0.5' NORTH OF BLACKTOP EDGE)

which reference or witness monuments are located in the manner following:



BK-SS
T/T
Revised date

10/18/91
8/08/96
1/02/02
4-19-11

N.A.D. 1983 Coordinates
(1996 adjustment)

County Project Coordinates	State Plane Coordinates
Northing <u>190661.3798</u>	Y _____
Easting <u>502820.6504</u>	X _____

Date 1/02/02

CERTIFICATE OF LOCATION OF GOVERNMENT CORNER

County of Anoka

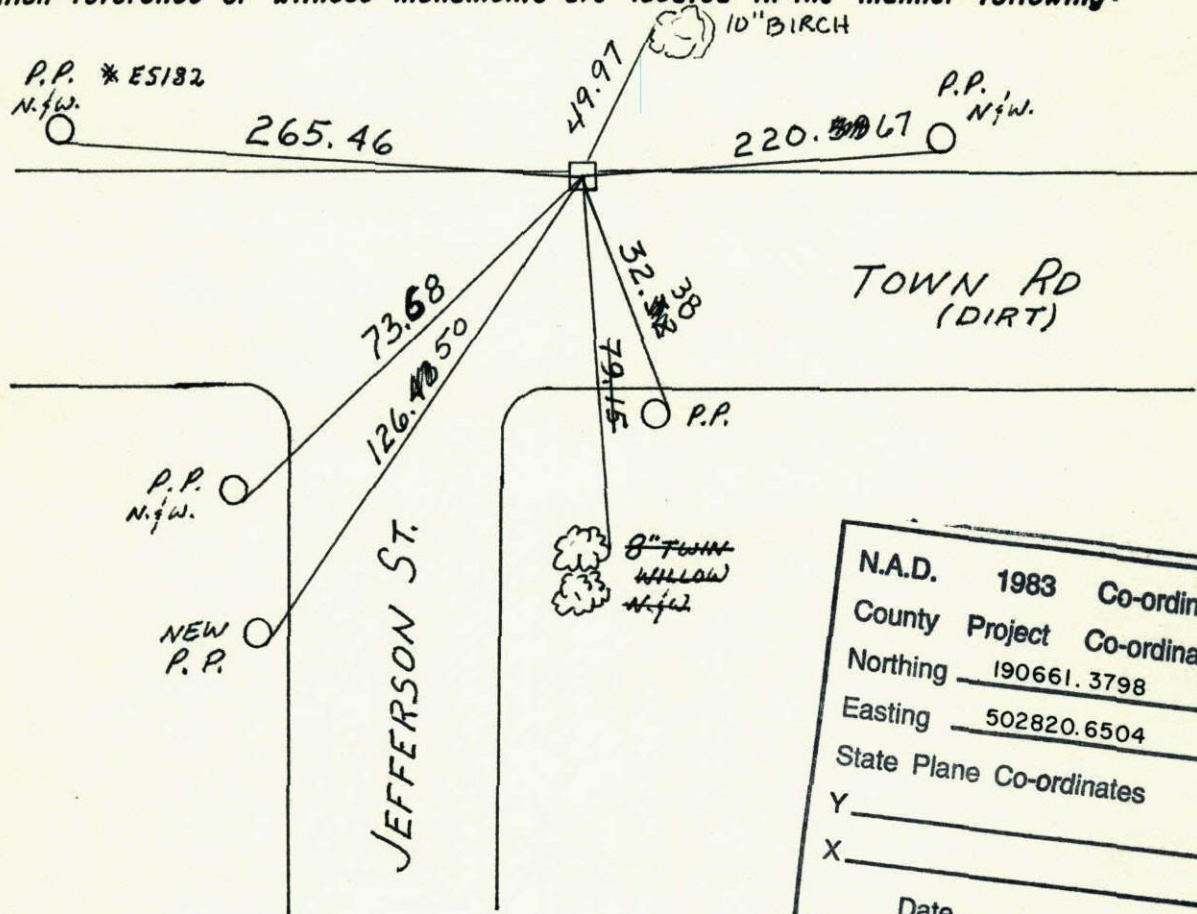
State of Minnesota

NORTH QTR. Corner of Sec. 7 Township 32 Range 23

I hereby certify that on the 24 day of OCT., 1962, I found the described corner which was evidenced by GRANITE

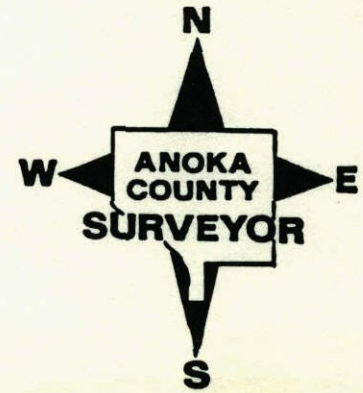
and I further certify that to perpetuate the location of said corner, I did, at the exact location thereof, place a permanent marker consisting of GRANITE MON.

which reference or witness monuments are located in the manner following:



N.A.D.	1983	Co-ordinates
County	Project	Co-ordinates
Northing	190661.3798	
Easting	502820.6504	
State Plane Co-ordinates		
Y	_____	
X	_____	
Date	_____	

Revised date	Revised date	Revised date
41-7-90		
10-18-91		
8-8-96		
1-2-02		



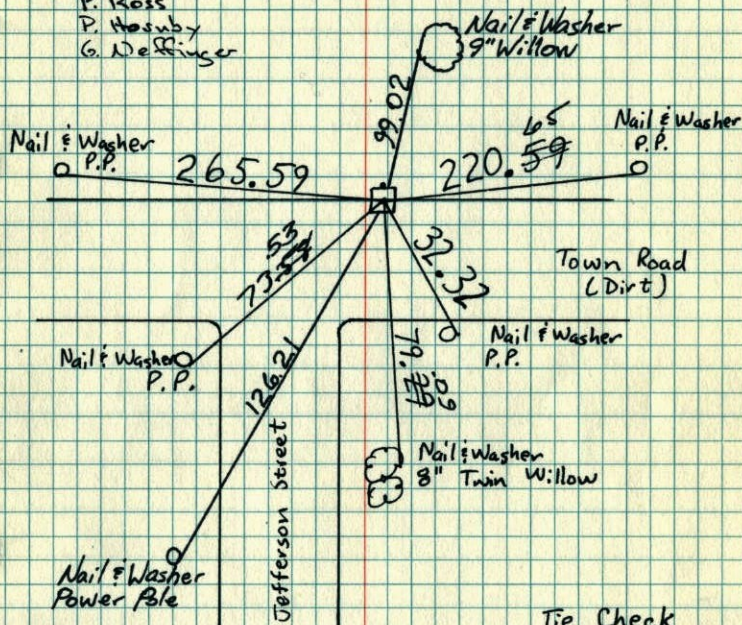
N 1/4 Cor. Sec. 7, T32, R23

33

Found 6" Square Granite Monument.
Monument was turned up by Road
Grader Operator

Granite down 1.2' ± With
Iron Pipe on North face

Tie Check
6-24-81
P. Ross
P. Hoesby
G. DeRinger



Tie Check
June 25, 1984
D. Ross
P. Bennett
G. Lips

Tie Check
June 8, 1978
D. Dahl
B. Sannerud
M. Kiscaw

Tie Check
June 5, 1975
D. Dahl
B. Sannerud
G. Adams

TEMPERATURE CORRECTED
AND HORIZONTALLY
TAPED MEASUREMENTS

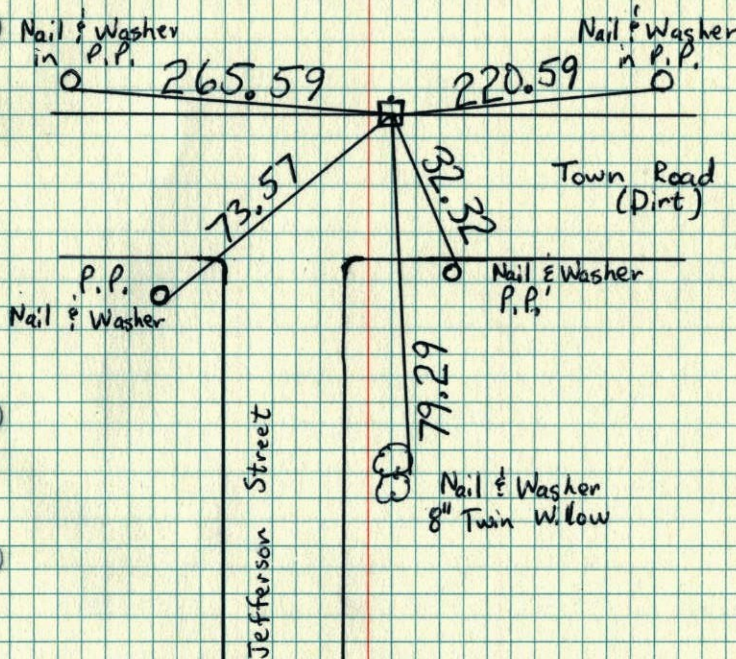
ROBERT W. ANDERSON
COUNTY SURVEYOR
ANOKA COUNTY, MINNESOTA

N 1/4 Cor. Sec. 7, T32, R23

33

Found 6" Square Granite Monument
Monument was turned up by Road Grader
Operator
Granite down 1.2' ± with Iron Pipe
on North face

Tie Check
June 5, 1975
D. Dahl
B. Sannerud
G. Adams



TEMPERATURE CORRECTED
AND HORIZONTALLY
TAPED MEASUREMENTS

ROBERT W. ANDERSON
COUNTY SURVEYOR
ANOKA COUNTY, MINNESOTA

Redraw

32

N¹/₄ Cor. Sec. 7-T32-R23

Found 6" square Granite Monument
Monument was turned up by Road Grader Operator
Granite down 1.2"± with Iron Pipe on North face

Tie Check
May 17, 1971
R. Brien
J. Boettcher
D. Yensis

Nail + washer
Power Pole 265.59
265.50

59 Nail + washer
New Power Pole #ES183
220.65
171.52

Tie check
6/5/75
D. Dahl
B. Sannerud
G. Adams.

Nail + washer
in power pole

73.57

86.68

34.94

79.31
19.29
79.29

Nail + wash
in P.I.P.

Nail + washer
in top center
fence posts

Jefferson
Street

Nail + washer
8" Twin Willow

TEMPERATURE CORRECTED
AND HORIZONTALLY
TAPED MEASUREMENTS

ROLAND W. ANDERSON
COUNTY SURVEYOR
ANOKA COUNTY, MINNESOTA

33

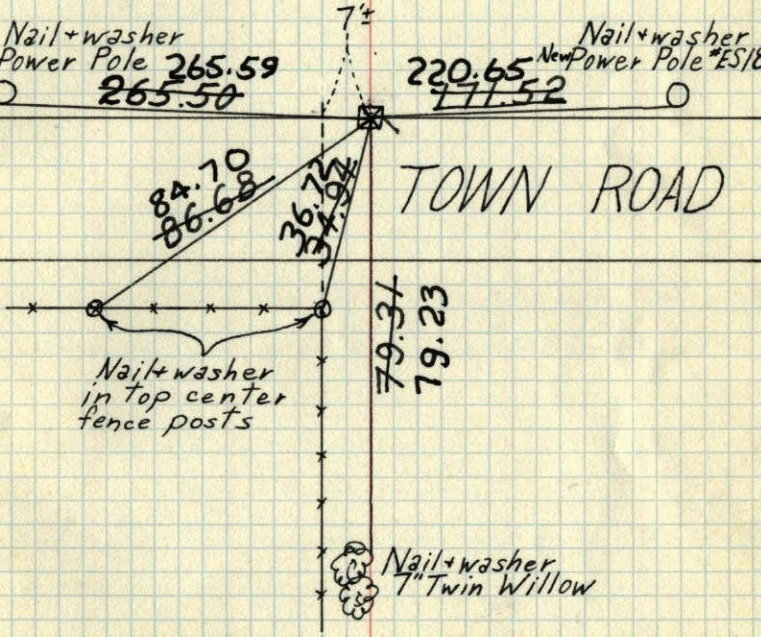
N¹/₄ Cor. Sec. 7-T32-R23

Found 6" square Granite Monument
Monument was turned up by Road Grader Operator
Granite down 1.2"± with Iron Pipe on North face

Tie Check
May 17, 1971
R. Brien
J. Boettcher
D. Yensis

Nail + washer
Power Pole 265.59
265.50

Nail + washer
New Power Pole #ES183
220.65
171.52



TEMPERATURE CORRECTED
AND HORIZONTALLY
TAPED MEASUREMENTS

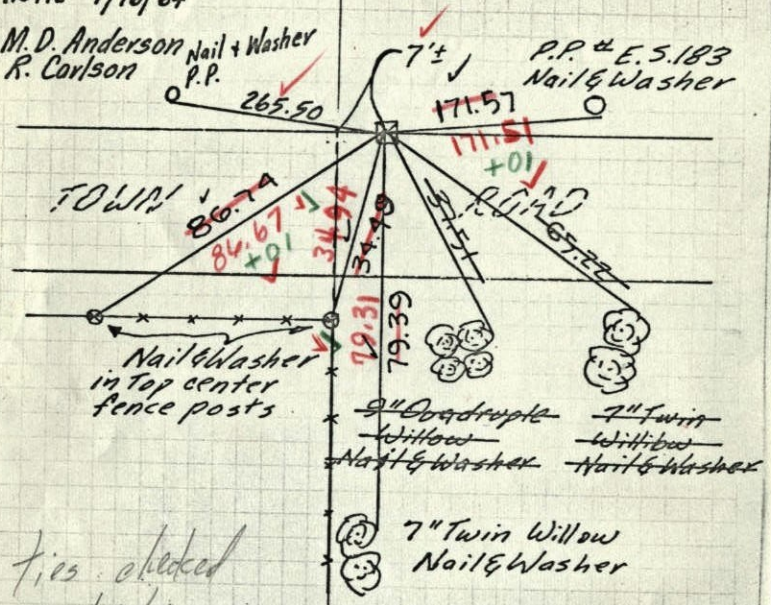
ROLAND W. ANDERSON
COUNTY SURVEYOR
ANOKA COUNTY, MINNESOTA

No. 1/4 Cor. Sec. 7-32-23

Found 6" sq. Granite Monument
Monument was truned up by Road Grader
operator.
Granite down 1.2" with Iron Pipe on N.
face

Oct. 29, 1962
J. Oliver
M. D. Anderson
Retie 7/16/64

M. D. Anderson Nail + Washer
R. Carlson P.P.



fics. checked
7/19/66

B. Rogers
D. Powell
J. Berry

faps #5
temp. 71°

ROLAND W. ANDERSON
COUNTY SURVEYOR
ANOKA COUNTY, MINNESOTA

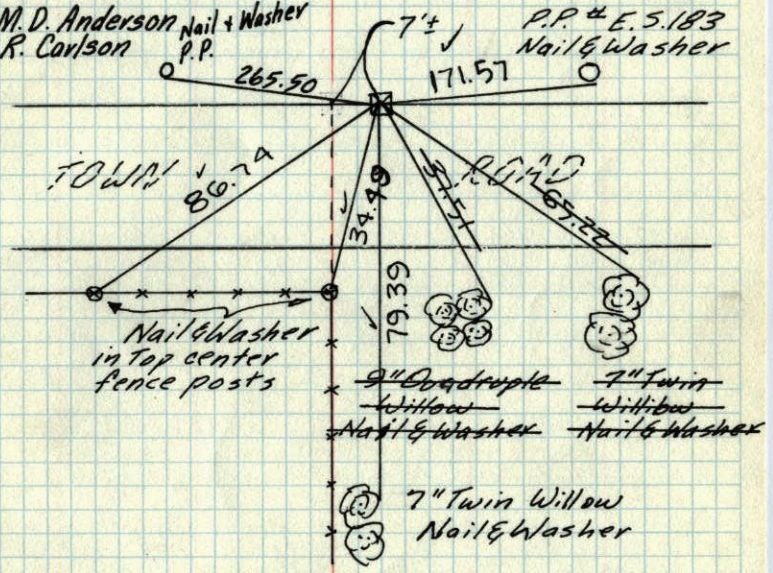
TEMPERATURE CORRECTED
AND HORIZONTALLY
TAPED MEASUREMENTS

No. 1/4 Cor. Sec. 7-32-23

Found 6" sq. Granite Monument
Monument was truned up by Road Grader
operator.
Granite down 1.2" with Iron Pipe on N.
face

Oct. 29, 1962
J. Oliver
M. D. Anderson
Retie 7/16/64

M. D. Anderson Nail + Washer
R. Carlson P.P.



ROLAND W. ANDERSON
COUNTY SURVEYOR
ANOKA COUNTY, MINNESOTA

TEMPERATURE CORRECTED
AND HORIZONTALLY
TAPED MEASUREMENTS

No. 1/4 Cor. Sec. 7, T32, R23

Found 6" Sq. Granite Mon. Standing up on
No. Edge of dirt Rd. as uncovered by Grader,
Grader operators says he did not move
Granite when he hit it.

